
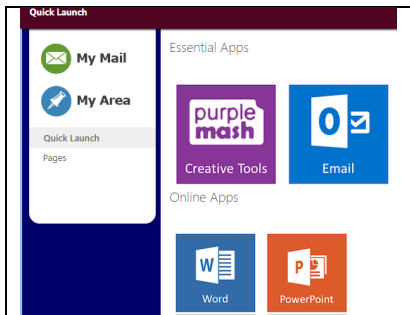
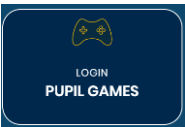



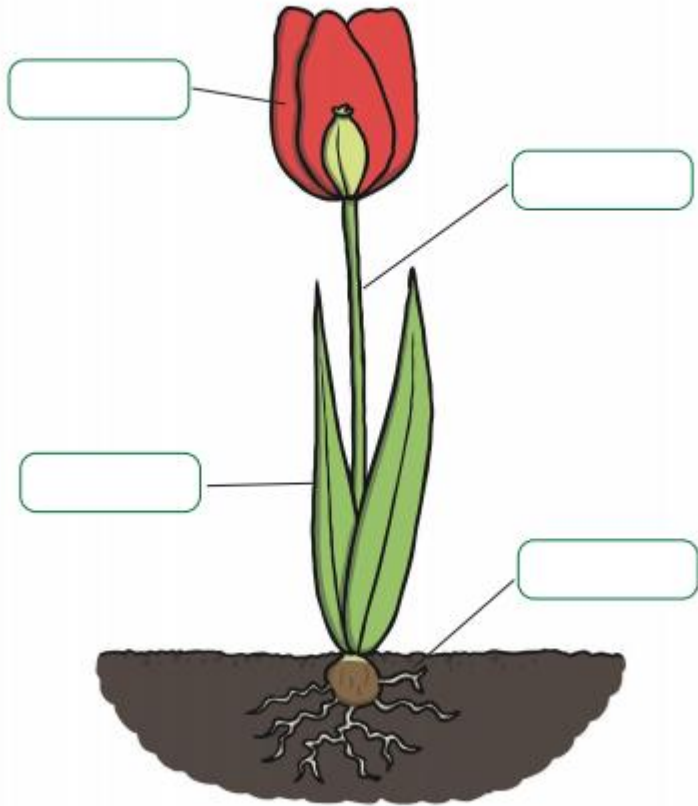




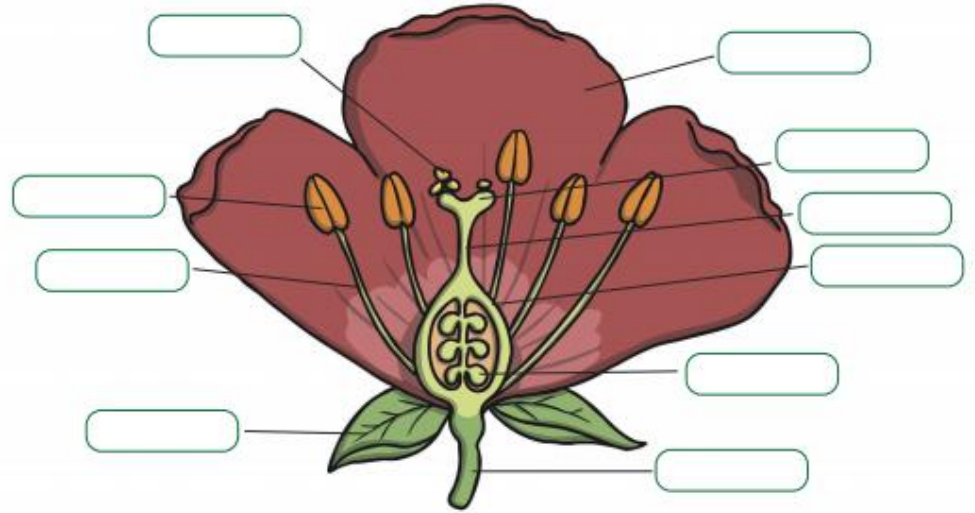
Year 3 Homework Menu - Summer term 2

| | | | | |
|---|---|---|---|--|
| <p><u>Science 1</u> <u>Plants</u> What do plants need in order to grow well? Research this information and create an information poster of 'Top-Tips.' Think about including some of the features of an information text: Headings, sub-headings, facts, information, bullet points, pictures/diagrams.</p> | <p><u>Science 2</u> <u>Plants</u> Can you label the different parts of a plant? Then, explain the functions of each different part.</p> | <p><u>Science 3</u> <u>Plants</u> Can you create a life cycle of a flowering plant? Look at the life cycle below, can you research the different stages and draw in diagrams for each one?</p> | <p><u>Topic</u> <u>Leamington Spa</u> Choose one of the famous landmarks of Leamington Spa. Using the work we completed on Stonehenge, use a pencil to shade and show the different tones.</p>  | <p><u>Topic</u> Leamington Spa Research how it got the title Royal. Who gave it to the town? Why? How did it change the town? Did it become more popular?</p> |
| <p><u>Computing -Powerpoint</u> Using Power point on the Welearn homepage, create a new powerpoint presentation all about a famous person from Leamington Spa. It could be someone from history like Benjamin Satchwell, Jephson of Jephson Gardens, or a modern day celebrity.</p>  | <p><u>French</u> Log onto Language Angels and click on:</p>  <p>Choose what kind of device you are working in on then click</p>  <p>After that, click</p>  <p>Work your way through Any of the games that are on there.</p> | <p><u>RE</u> What does it mean to be a Christian in Britain today? Choose one of the local Christian churches. Research and find out what Christians do to help in the wider, local community. It could be things like toddler groups, food banks, etc.. See if you can find out why they run these groups and services.</p> | <p><u>Music</u> Use the link below to login to YUMU https://www.MusicForLifeInteractive.net/yumu Your username is: p1850084 Your password is: canary Listen to 'Bringing us together,' What kind of music is it? Listen carefully to the song, can you list all of the instruments you can hear? Have a go at completing step 1 and 2.</p> | <p><u>PE</u> Have a look at the challenge below (Larger version below)</p>  |

Parts of a Plant



Parts of a Flower



Life Cycle of a Dandelion

Draw a picture in each box to show the stages in the life cycle of a dandelion.



The dandelion seed head is blown away by the wind.



A dandelion seed begins to grow in the ground.



A dandelion plant grows with buds and leaves.



The dandelion flower blooms.



The dandelion flower becomes a seed head.



Get Set 4 PE.

5 minute movement challenge

What you need: A little space and a timer.

How to play:

- You have 5 minutes, how many times can you complete this circuit?



- 10 x star jumps
- 5 x lunges on each leg
- 10 x touch your toes and jump

Or choose your own exercises to use.

Keep a steady breath throughout.



Get Set 4 PE.

Chair workout

What you need: One chair per pupil.

How to play:

Pupils move their chairs back from their table and complete the following exercises.

- **Squats** : sit on chair and stand x 20
- **Leg extensions** : Place ankles together, hold onto the sides of the chair. Raise your feet to 180 degrees. Bend and straighten your legs x 20
- **Lunges** : Stand and hold on to the back of the chair. Lunge by stepping backwards alternating feet x 20



Repeat